

Cable ID	Summary	Test Limit	Length	Headroom	Date / Time
TL-C6A-3M-01	PASS	TIA Cat 6A Channel	11 ft	5.6 dB (NEXT)	03/06/2019 06:30 PM
TL-C6A-3M-02	PASS	TIA Cat 6A Channel	11 ft	4.9 dB (NEXT)	03/06/2019 06:32 PM
TL-C6A-3M-03	PASS	TIA Cat 6A Channel	11 ft	6.3 dB (NEXT)	03/06/2019 06:33 PM
TL-C6A-5M-01	PASS	TIA Cat 6A Channel	19 ft	5.5 dB (NEXT)	03/06/2019 06:34 PM
TL-C6A-5M-02	PASS	TIA Cat 6A Channel	19 ft	3.2 dB (NEXT)	03/06/2019 06:36 PM
TL-C6A-5M-03	PASS	TIA Cat 6A Channel	19 ft	3.4 dB (NEXT)	03/06/2019 06:37 PM

Total Length:	90 ft
Number of Reports:	6
Number of Passing Reports:	6
Number of Failing Reports:	0
Number of Warning Reports:	0
Documentation Only:	0



Cable ID: TL-C6A-3M-01

Date / Time: 03/06/2019 06:30:23 PM

Headroom 5.6 dB (NEXT 36-45)

Test Limit: TIA Cat 6A Channel

Cable Type: Cat 6A F/UTP

NVP: 74.0%

Operator: ALEX

Software Version: V6.0 Build 6

Limits Version: V7.0

Calibration Start Date:

Main (Module): 05/11/2018

Remote (Module): 05/11/2018

Test Summary: PASS

Model: DSX-8000

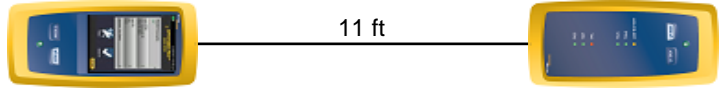
Main S/N: 1747425

Remote S/N: 1747424

Main Adapter: DSX-CHA804

Remote Adapter: DSX-CHA804

Length (ft), Limit 328	[Pair 12]	11
Prop. Delay (ns), Limit 555	[Pair 36]	16
Delay Skew (ns), Limit 50	[Pair 12]	0
Resistance (ohms)	[Pair 12]	0.63
Insertion Loss Margin (dB)	[Pair 45]	45.6
Frequency (MHz)	[Pair 45]	493.0
Limit (dB)	[Pair 45]	48.9



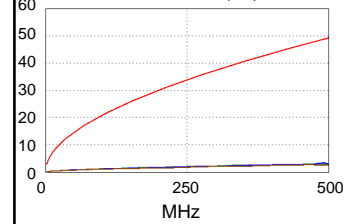
11 ft

Wire Map (T568B)

PASS

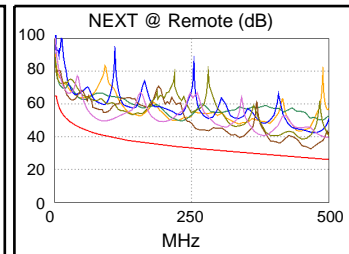
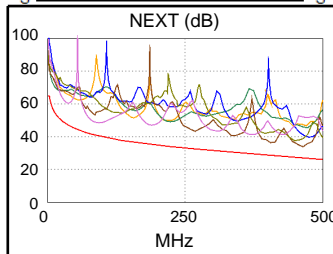


Insertion Loss (dB)

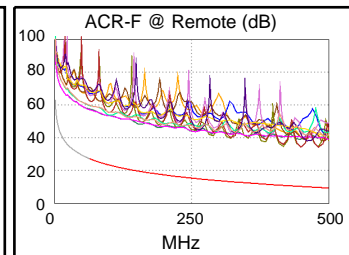
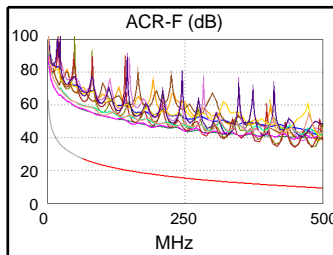


Worst Case Margin Worst Case Value

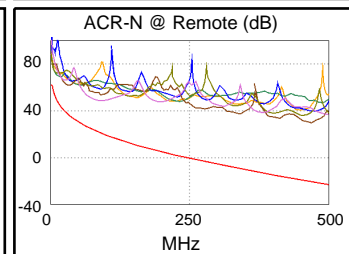
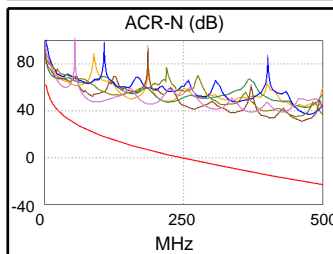
PASS	MAIN	SR	MAIN	SR
Worst Pair	36-45	36-45	36-45	36-45
NEXT (dB)	6.9	5.6	6.9	5.6
Freq. (MHz)	464.0	469.0	464.0	469.0
Limit (dB)	27.0	26.9	27.0	26.9
Worst Pair	36	36	36	36
PS NEXT (dB)	8.4	7.8	8.4	7.8
Freq. (MHz)	464.0	467.0	464.0	467.0
Limit (dB)	24.1	24.0	24.1	24.0



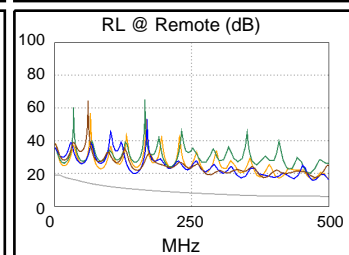
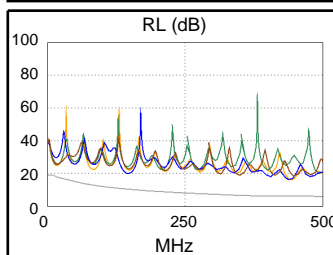
PASS	MAIN	SR	MAIN	SR
Worst Pair	45-36	36-45	36-45	36-45
ACR-F (dB)	23.7	23.7	24.3	24.0
Freq. (MHz)	416.0	416.0	483.0	450.0
Limit (dB)	10.9	10.9	9.6	10.2
Worst Pair	36	36	36	36
PS ACR-F (dB)	25.5	25.4	25.5	25.5
Freq. (MHz)	450.0	451.0	450.0	453.0
Limit (dB)	7.2	7.2	7.2	7.1



N/A	MAIN	SR	MAIN	SR
Worst Pair	36-45	36-78	36-45	36-45
ACR-N (dB)	19.0	17.4	51.4	50.5
Freq. (MHz)	2.9	3.3	464.0	469.0
Limit (dB)	61.4	60.7	-20.4	-20.8
Worst Pair	45	36	36	36
PS ACR-N (dB)	19.1	16.8	52.7	52.4
Freq. (MHz)	4.4	3.3	464.0	467.0
Limit (dB)	55.6	58.2	-23.2	-23.5



PASS	MAIN	SR	MAIN	SR
Worst Pair	45	45	45	45
RL (dB)	11.5	10.5	11.5	10.5
Freq. (MHz)	432.0	499.0	432.0	499.0
Limit (dB)	6.0	6.0	6.0	6.0



Compliant Network Standards:

10BASE-T	100BASE-TX	100BASE-T4
1000BASE-T	10GBASE-T	ATM-25
ATM-51	ATM-155	100VG-AnyLan
TR-4	TR-16 Active	TR-16 Passive



Cable ID: TL-C6A-3M-02

Date / Time: 03/06/2019 06:32:57 PM

Headroom 4.9 dB (NEXT 45-78)

Test Limit: TIA Cat 6A Channel

Cable Type: Cat 6A F/UTP

NVP: 74.0%

Operator: ALEX

Software Version: V6.0 Build 6

Limits Version: V7.0

Calibration Start Date:

Main (Module): 05/11/2018

Remote (Module): 05/11/2018

Test Summary: PASS

Model: DSX-8000

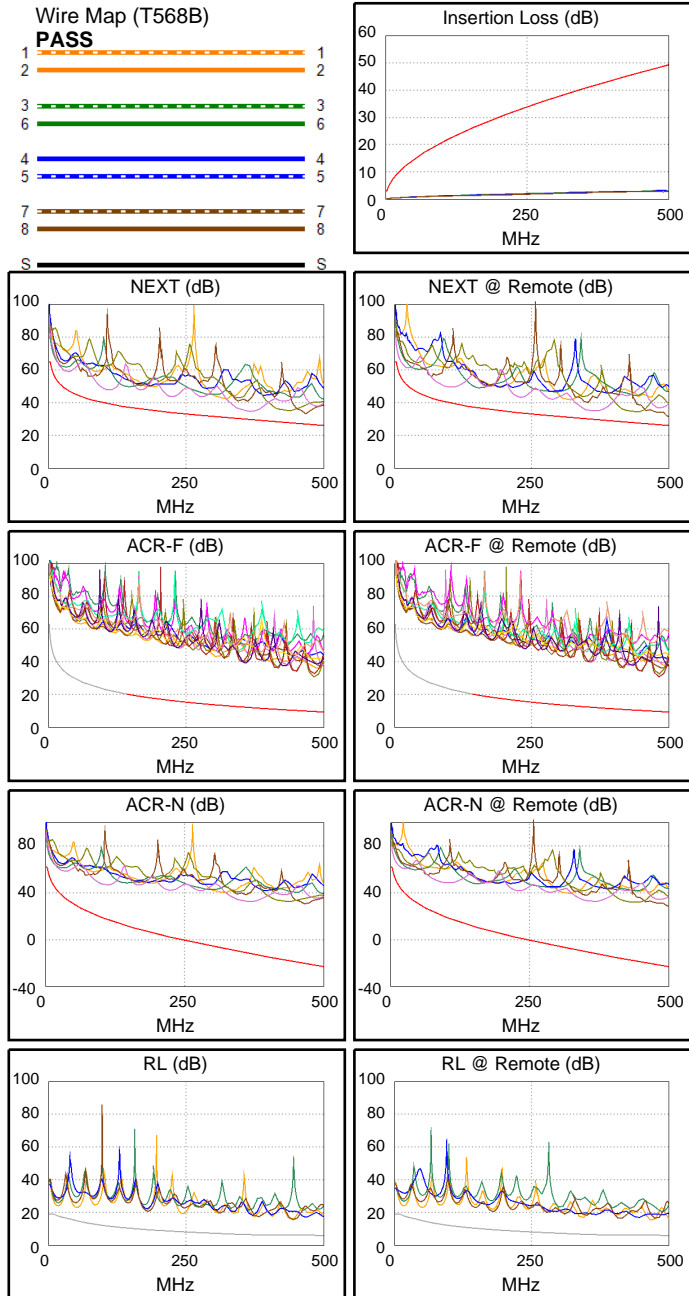
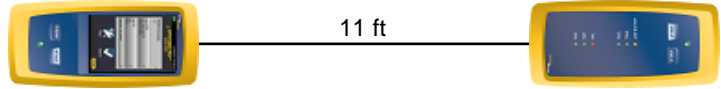
Main S/N: 1747425

Remote S/N: 1747424

Main Adapter: DSX-CHA804

Remote Adapter: DSX-CHA804

Length (ft), Limit 328	[Pair 12]	11
Prop. Delay (ns), Limit 555	[Pair 36]	16
Delay Skew (ns), Limit 50	[Pair 12]	0
Resistance (ohms)	[Pair 45]	0.63
Insertion Loss Margin (dB)	[Pair 45]	45.5
Frequency (MHz)	[Pair 45]	490.0
Limit (dB)	[Pair 45]	48.8



Worst Case Margin Worst Case Value

PASS	MAIN	SR	MAIN	SR
Worst Pair	45-78	45-78	36-45	36-45
NEXT (dB)	4.9	5.0	6.2	5.5
Freq. (MHz)	366.0	354.0	468.0	500.0
Limit (dB)	29.8	30.2	26.9	26.1
Worst Pair	45	45	36	45
PS NEXT (dB)	7.0	6.7	8.1	7.5
Freq. (MHz)	364.0	352.0	468.0	499.0
Limit (dB)	26.9	27.3	24.0	23.3

PASS	MAIN	SR	MAIN	SR
Worst Pair	36-45	45-36	36-45	45-36
ACR-F (dB)	21.0	21.2	21.0	21.2
Freq. (MHz)	483.0	483.0	483.0	483.0
Limit (dB)	9.6	9.6	9.6	9.6
Worst Pair	36	36	36	36
PS ACR-F (dB)	24.0	23.6	24.0	23.7
Freq. (MHz)	483.0	483.0	483.0	485.0
Limit (dB)	6.6	6.6	6.6	6.5

N/A	MAIN	SR	MAIN	SR
Worst Pair	12-45	45-78	36-45	36-45
ACR-N (dB)	17.2	14.0	51.0	51.9
Freq. (MHz)	4.5	3.1	468.0	499.0
Limit (dB)	57.8	61.1	-20.7	-23.1
Worst Pair	45	45	36	36
PS ACR-N (dB)	17.6	15.7	52.8	53.9
Freq. (MHz)	3.8	3.6	468.0	499.0
Limit (dB)	57.0	57.3	-23.6	-26.0

PASS	MAIN	SR	MAIN	SR
Worst Pair	45	12	78	12
RL (dB)	11.9	9.3	9.6	9.3
Freq. (MHz)	461.0	468.0	446.0	468.0
Limit (dB)	6.0	6.0	6.0	6.0

Compliant Network Standards:
 10BASE-T 100BASE-TX 100BASE-T4
 1000BASE-T 10GBASE-T ATM-25
 ATM-51 ATM-155 100VG-AnyLan
 TR-4 TR-16 Active TR-16 Passive



Cable ID: TL-C6A-3M-03

Date / Time: 03/06/2019 06:33:34 PM

Headroom 6.3 dB (NEXT 45-78)

Test Limit: TIA Cat 6A Channel

Cable Type: Cat 6A F/UTP

NVP: 74.0%

Operator: ALEX

Software Version: V6.0 Build 6

Limits Version: V7.0

Calibration Start Date:

Main (Module): 05/11/2018

Remote (Module): 05/11/2018

Test Summary: PASS

Model: DSX-8000

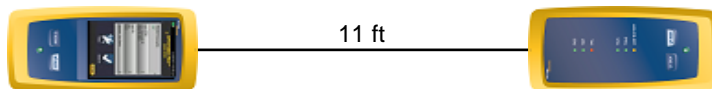
Main S/N: 1747425

Remote S/N: 1747424

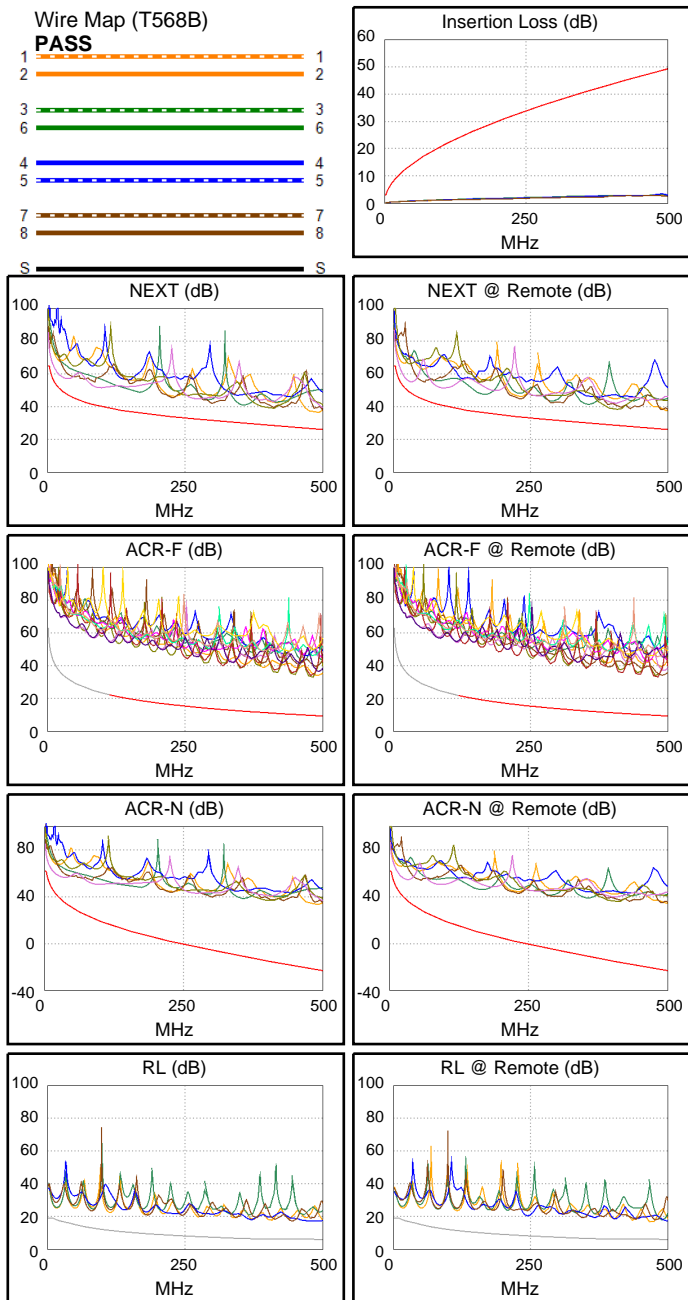
Main Adapter: DSX-CHA804

Remote Adapter: DSX-CHA804

Length (ft), Limit 328	[Pair 12]	11
Prop. Delay (ns), Limit 555	[Pair 36]	16
Delay Skew (ns), Limit 50	[Pair 12]	0
Resistance (ohms)	[Pair 12]	0.64
Insertion Loss Margin (dB)	[Pair 45]	45.6
Frequency (MHz)	[Pair 45]	492.0
Limit (dB)	[Pair 45]	48.9



11 ft



Worst Case Margin Worst Case Value

PASS	MAIN	SR	MAIN	SR
Worst Pair	45-78	45-78	12-36	12-36
NEXT (dB)	8.2	6.3	10.3	11.5
Freq. (MHz)	21.4	25.3	491.0	498.0
Limit (dB)	51.2	50.0	26.3	26.1
Worst Pair	36	78	36	36
PS NEXT (dB)	9.8	8.5	10.7	11.2
Freq. (MHz)	408.0	26.0	500.0	500.0
Limit (dB)	25.6	47.1	23.2	23.2

PASS	MAIN	SR	MAIN	SR
Worst Pair	36-45	45-36	36-45	45-36
ACR-F (dB)	22.9	23.0	22.9	23.0
Freq. (MHz)	479.0	479.0	479.0	479.0
Limit (dB)	9.7	9.7	9.7	9.7
Worst Pair	36	36	36	36
PS ACR-F (dB)	24.3	25.3	24.4	25.3
Freq. (MHz)	484.0	479.0	485.0	479.0
Limit (dB)	6.6	6.7	6.5	6.7

N/A	MAIN	SR	MAIN	SR
Worst Pair	45-78	45-78	12-36	12-36
ACR-N (dB)	13.7	14.9	56.0	57.7
Freq. (MHz)	3.6	17.8	491.0	498.0
Limit (dB)	59.8	43.9	-22.5	-23.1
Worst Pair	45	45	36	36
PS ACR-N (dB)	15.1	16.0	57.1	57.6
Freq. (MHz)	3.5	3.3	500.0	500.0
Limit (dB)	57.6	58.2	-26.1	-26.1

PASS	MAIN	SR	MAIN	SR
Worst Pair	45	45	45	45
RL (dB)	11.1	11.4	11.1	11.4
Freq. (MHz)	494.0	497.0	494.0	497.0
Limit (dB)	6.0	6.0	6.0	6.0

Compliant Network Standards:
 10BASE-T 100BASE-TX 100BASE-T4
 1000BASE-T 10GBASE-T ATM-25
 ATM-51 ATM-155 100VG-AnyLan
 TR-4 TR-16 Active TR-16 Passive



Cable ID: TL-C6A-5M-01

Date / Time: 03/06/2019 06:34:21 PM

Headroom 5.5 dB (NEXT 45-78)

Test Limit: TIA Cat 6A Channel

Cable Type: Cat 6A F/UTP

NVP: 74.0%

Operator: ALEX

Software Version: V6.0 Build 6

Limits Version: V7.0

Calibration Start Date:

Main (Module): 05/11/2018

Remote (Module): 05/11/2018

Test Summary: PASS

Model: DSX-8000

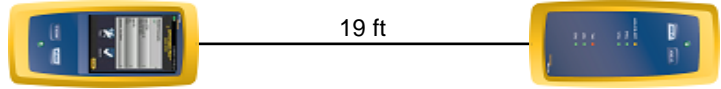
Main S/N: 1747425

Remote S/N: 1747424

Main Adapter: DSX-CHA804

Remote Adapter: DSX-CHA804

Length (ft), Limit 328	[Pair 12]	19
Prop. Delay (ns), Limit 555	[Pair 36]	27
Delay Skew (ns), Limit 50	[Pair 36]	1
Resistance (ohms)	[Pair 45]	1.14
Insertion Loss Margin (dB)	[Pair 36]	43.9
Frequency (MHz)	[Pair 36]	495.0
Limit (dB)	[Pair 36]	49.0

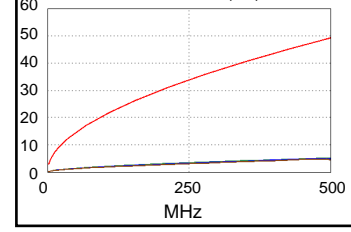


Wire Map (T568B)

PASS

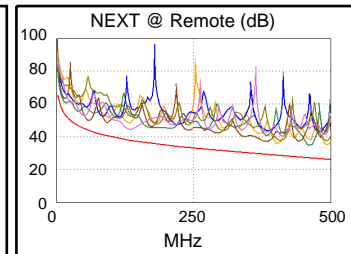
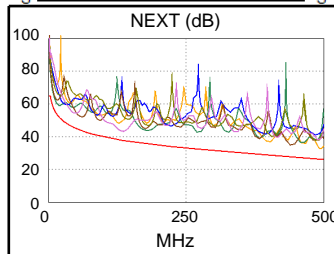


Insertion Loss (dB)

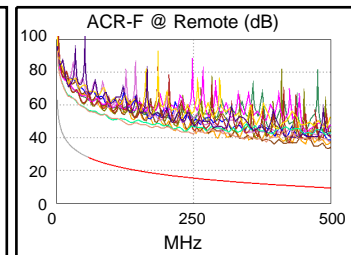
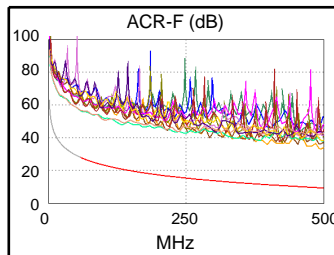


Worst Case Margin Worst Case Value

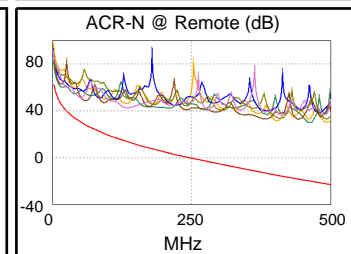
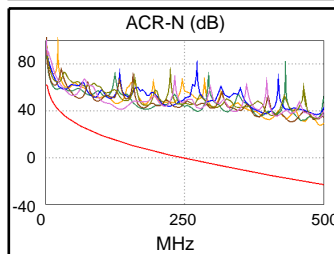
PASS	MAIN	SR	MAIN	SR
Worst Pair	45-78	36-45	12-36	12-45
NEXT (dB)	5.5	6.0	6.6	7.5
Freq. (MHz)	134.0	57.8	495.0	462.0
Limit (dB)	37.8	44.0	26.2	27.0
Worst Pair	45	45	36	12
PS NEXT (dB)	7.0	6.8	7.6	8.5
Freq. (MHz)	13.6	56.3	493.0	461.0
Limit (dB)	51.8	41.4	23.4	24.2



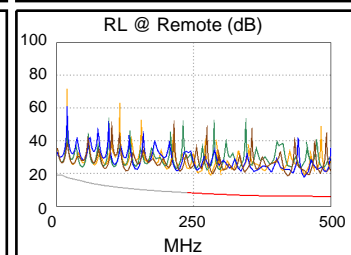
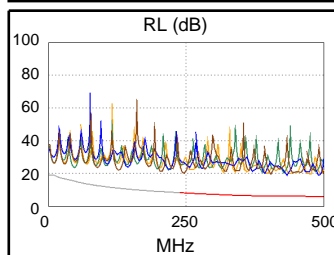
PASS	MAIN	SR	MAIN	SR
Worst Pair	12-36	36-12	12-36	36-12
ACR-F (dB)	23.7	24.1	23.7	24.2
Freq. (MHz)	495.0	495.0	495.0	496.0
Limit (dB)	9.4	9.4	9.4	9.3
Worst Pair	36	36	36	12
PS ACR-F (dB)	25.4	25.9	26.0	26.7
Freq. (MHz)	420.0	426.0	495.0	494.0
Limit (dB)	7.8	7.7	6.4	6.4



N/A	MAIN	SR	MAIN	SR
Worst Pair	12-45	12-45	12-36	12-45
ACR-N (dB)	13.5	13.2	50.5	50.1
Freq. (MHz)	12.5	9.4	495.0	463.0
Limit (dB)	47.8	50.8	-22.8	-20.3
Worst Pair	45	45	36	12
PS ACR-N (dB)	13.7	13.6	51.4	50.9
Freq. (MHz)	12.4	10.8	493.0	461.0
Limit (dB)	45.3	46.8	-25.5	-23.0



PASS	MAIN	SR	MAIN	SR
Worst Pair	78	12	12	45
RL (dB)	11.9	11.6	12.5	11.6
Freq. (MHz)	245.5	281.0	473.0	453.0
Limit (dB)	8.1	7.5	6.0	6.0



Compliant Network Standards:

10BASE-T	100BASE-TX	100BASE-T4
1000BASE-T	10GBASE-T	ATM-25
ATM-51	ATM-155	100VG-AnyLan
TR-4	TR-16 Active	TR-16 Passive



Cable ID: TL-C6A-5M-02

Date / Time: 03/06/2019 06:36:41 PM

Headroom 3.2 dB (NEXT 36-45)

Test Limit: TIA Cat 6A Channel

Cable Type: Cat 6A F/UTP

NVP: 74.0%

Operator: ALEX

Software Version: V6.0 Build 6

Limits Version: V7.0

Calibration Start Date:

Main (Module): 05/11/2018

Remote (Module): 05/11/2018

Test Summary: PASS

Model: DSX-8000

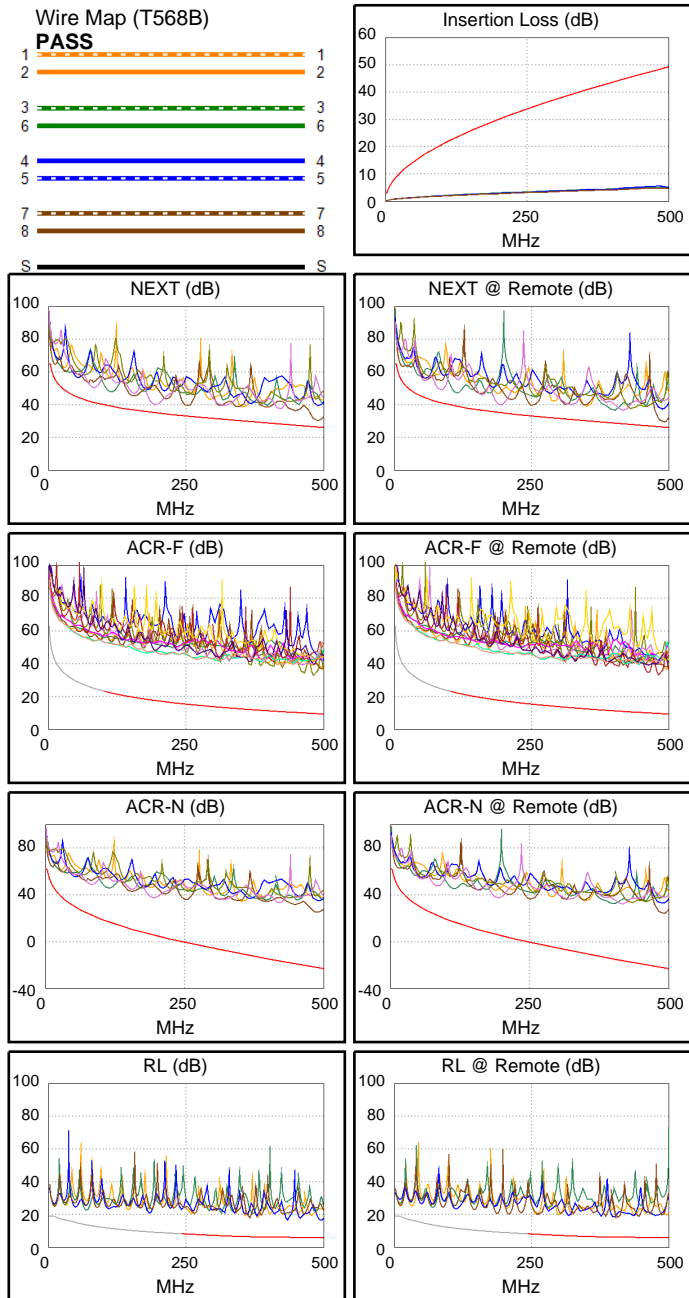
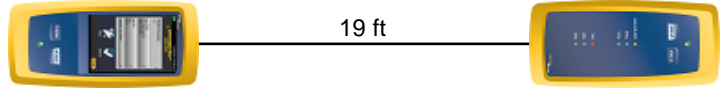
Main S/N: 1747425

Remote S/N: 1747424

Main Adapter: DSX-CHA804

Remote Adapter: DSX-CHA804

Length (ft), Limit 328	[Pair 12]	19
Prop. Delay (ns), Limit 555	[Pair 36]	27
Delay Skew (ns), Limit 50	[Pair 36]	1
Resistance (ohms)	[Pair 12]	1.13
Insertion Loss Margin (dB)	[Pair 45]	43.1
Frequency (MHz)	[Pair 45]	487.0
Limit (dB)	[Pair 45]	48.6



Worst Case Margin Worst Case Value

PASS	MAIN	SR	MAIN	SR
Worst Pair	36-45	36-45	36-45	36-45
NEXT (dB)	3.8	3.2	3.8	3.2
Freq. (MHz)	489.0	492.0	489.0	492.0
Limit (dB)	26.4	26.3	26.4	26.3
Worst Pair	36	45	36	45
PS NEXT (dB)	6.4	5.7	6.4	5.8
Freq. (MHz)	490.0	490.0	490.0	492.0
Limit (dB)	23.5	23.5	23.5	23.4

PASS	MAIN	SR	MAIN	SR
Worst Pair	36-45	45-36	36-45	45-36
ACR-F (dB)	22.8	23.1	22.8	23.1
Freq. (MHz)	484.0	483.0	484.0	483.0
Limit (dB)	9.6	9.6	9.6	9.6
Worst Pair	45	36	45	36
PS ACR-F (dB)	24.9	25.1	24.9	25.1
Freq. (MHz)	484.0	483.0	484.0	483.0
Limit (dB)	6.6	6.6	6.6	6.6

N/A	MAIN	SR	MAIN	SR
Worst Pair	36-45	36-45	36-45	36-45
ACR-N (dB)	13.5	14.3	47.1	46.6
Freq. (MHz)	4.9	9.4	489.0	490.0
Limit (dB)	57.1	50.8	-22.3	-22.4
Worst Pair	36	45	45	45
PS ACR-N (dB)	14.1	15.6	50.0	49.1
Freq. (MHz)	3.6	9.4	490.0	490.0
Limit (dB)	57.3	48.2	-25.3	-25.3

PASS	MAIN	SR	MAIN	SR
Worst Pair	45	12	45	78
RL (dB)	10.5	11.6	10.5	12.3
Freq. (MHz)	496.0	260.0	496.0	407.0
Limit (dB)	6.0	7.9	6.0	6.0

Compliant Network Standards:

10BASE-T	100BASE-TX	100BASE-T4
1000BASE-T	10GBASE-T	ATM-25
ATM-51	ATM-155	100VG-AnyLan
TR-4	TR-16 Active	TR-16 Passive



Cable ID: TL-C6A-5M-03

Date / Time: 03/06/2019 06:37:22 PM

Headroom 3.4 dB (NEXT 45-78)

Test Limit: TIA Cat 6A Channel

Cable Type: Cat 6A F/UTP

NVP: 74.0%

Operator: ALEX

Software Version: V6.0 Build 6

Limits Version: V7.0

Calibration Start Date:

Main (Module): 05/11/2018

Remote (Module): 05/11/2018

Test Summary: PASS

Model: DSX-8000

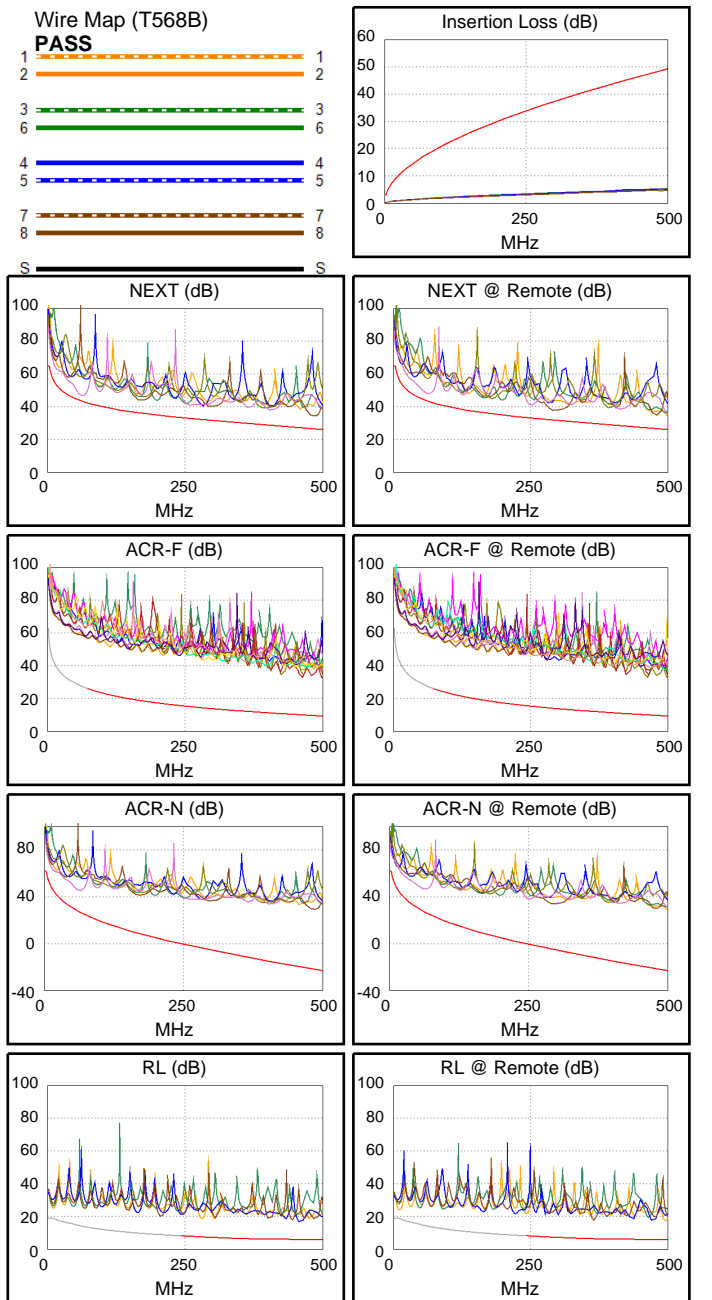
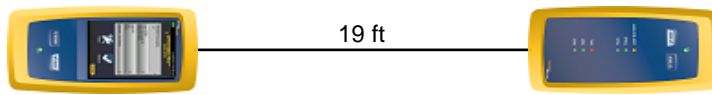
Main S/N: 1747425

Remote S/N: 1747424

Main Adapter: DSX-CHA804

Remote Adapter: DSX-CHA804

Length (ft), Limit 328	[Pair 12]	19
Prop. Delay (ns), Limit 555	[Pair 36]	27
Delay Skew (ns), Limit 50	[Pair 36]	1
Resistance (ohms)	[Pair 36]	1.15
Insertion Loss Margin (dB)	[Pair 12]	42.4
Frequency (MHz)	[Pair 12]	470.0
Limit (dB)	[Pair 12]	47.7



Worst Case Margin Worst Case Value

PASS	MAIN	SR	MAIN	SR
Worst Pair	45-78	45-78	36-45	12-36
NEXT (dB)	3.4	4.6	7.6	8.1
Freq. (MHz)	61.8	61.8	482.0	500.0
Limit (dB)	43.5	43.5	26.5	26.1
Worst Pair	78	78	36	12
PS NEXT (dB)	5.7	6.8	9.4	8.9
Freq. (MHz)	62.8	61.8	482.0	500.0
Limit (dB)	40.6	40.7	23.7	23.2

PASS	MAIN	SR	MAIN	SR
Worst Pair	45-36	36-45	45-36	36-45
ACR-F (dB)	22.8	22.8	22.9	23.0
Freq. (MHz)	462.0	462.0	500.0	500.0
Limit (dB)	10.0	10.0	9.3	9.3
Worst Pair	36	45	36	45
PS ACR-F (dB)	24.0	24.4	24.0	24.4
Freq. (MHz)	462.0	500.0	462.0	500.0
Limit (dB)	7.0	6.3	7.0	6.3

N/A	MAIN	SR	MAIN	SR
Worst Pair	45-78	45-78	36-45	12-36
ACR-N (dB)	16.8	15.9	51.0	52.3
Freq. (MHz)	11.8	3.3	484.0	500.0
Limit (dB)	48.4	60.7	-22.0	-23.2
Worst Pair	45	78	36	12
PS ACR-N (dB)	17.7	17.2	52.8	53.2
Freq. (MHz)	11.8	3.3	482.0	500.0
Limit (dB)	45.8	58.2	-24.7	-26.1

PASS	MAIN	SR	MAIN	SR
Worst Pair	45	45	45	45
RL (dB)	10.3	11.0	10.3	11.0
Freq. (MHz)	459.0	473.0	459.0	473.0
Limit (dB)	6.0	6.0	6.0	6.0

Compliant Network Standards:
 10BASE-T 100BASE-TX 100BASE-T4
 1000BASE-T 10GBASE-T ATM-25
 ATM-51 ATM-155 100VG-AnyLan
 TR-4 TR-16 Active TR-16 Passive